

THANK YOU

KATE STEED AND HER FLOCK

ROY BROWN AND SUZIE DARCEL

SUSAN HULL AND DEBRA WELCH

THOMAS GRAHAM

KATY BALL AND JENNIFER MASEY
of PORTSMOUTH CITY MUSEUM

MARKUS LLOYD

VICTORY MORRIS

STEPHEN BAILY

Seaside Sheep Show is part of EXPLORE, Aspex Gallery's lively programme of artists' residencies and public events, featuring British and international artists, in locations across Portsmouth until March 2008.

Front cover : 'Freda', a pedigree Suffolk Ewe

Organised by Charlie Murphy and Aspex Gallery, Portsmouth.

Programme and Poster Design by Charlie Murphy and Thomas Graham.



SEASIDE SHEEP SHOW



SOUTHSEA COMMON

SUNDAY 2ND JULY

PROGRAMME
& NOTES



SEASIDE SHEEP SHOW

Programme of Activities

11.00 - 1.30

Workshops, Stalls and Introduction to the flock

Family Art Club: Making Fancy Crooks

1.30 - 3.30

Family Art Club: Making Dandy Shepherdesses & Shepherds

Victory Morris and Narrations

3.30 - 5.00

Welcome

Victory Morris and Narrations

Parade and Prize giving for

'Fancy Crooks'

'Best dressed Shepherdess & Shepherd'

Competition Judges:

Mr. Stephen Baily, Portsmouth City Council

Ms. Joanne Bushnell, Aspex Gallery

SHEEP POUND.

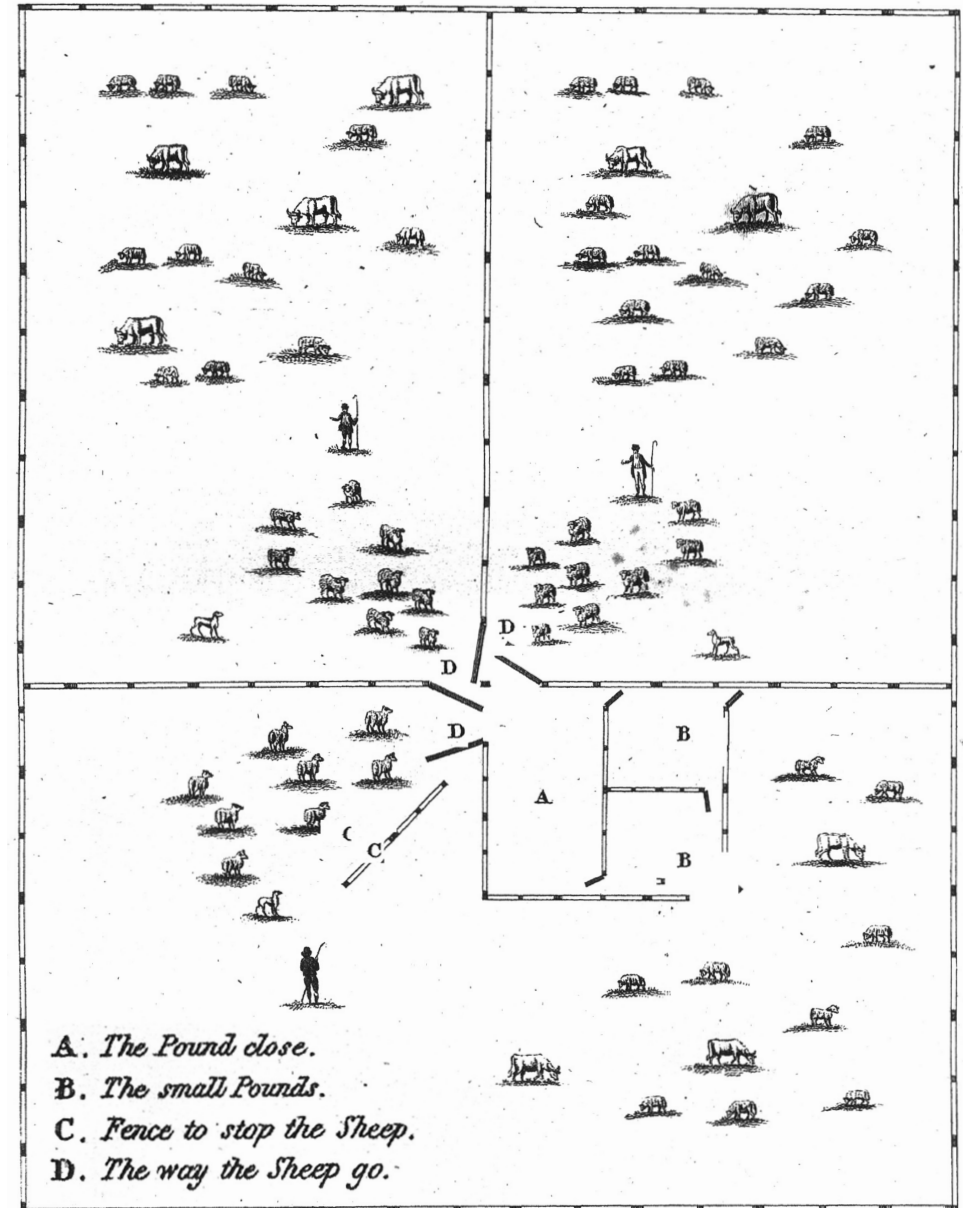


Plate III, A System of Sheep Grazing and Management as Practiced in Romney Marsh, 1809
by Daniel Grazier of Appledore, Kent © British Library



SHEEP CLIPPING.
 THE MEN TIED THEIR LEGS TOGETHER AND PLACED THEM IN THE LAPS OF THE WOMEN, WHO WERE SEATED ON THE GROUND AND WHO CLIPPED THEM WONDERFULLY WELL WITH HUGE SCISSORS OR CLIPPERS. IT WAS A VERY PICTURESQUE SIGHT, AND QUITE CURIOUS TO SEE THE SPLENDID THICK WOOL PEEL OFF LIKE A REGULAR COAT.
More leaves from our life in the Highlands.

Illustration from Backyard Pig and Sheep Book, by Anne Williams

Prism Press 1977

Sheepish

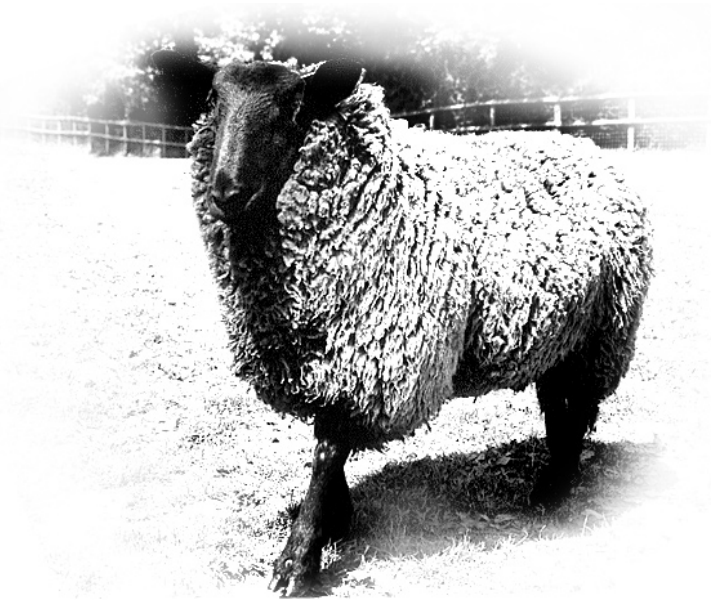
The origin and history of Cotswold sheep is a threefold subject...this famous breed may be said to be as old as the hills; “Cotes” meaning buildings in which they were housed, and “Wold” being a wild open country such as their habitation must, in its primitive times, have been.¹

For a thousand years the sheep was the most important animal in Britain. Much of the prosperity of Britain was built upon the export of wool; without sheep, our history might have been different.²

Although the wool industry has declined in relative importance to economy, animal husbandry, genetic engineering and the politics of land management are all prescient contemporary issues which both concern urban and rural communities.

1 ‘Cotswold Sheep’, A Prize Essay by William Scotford Harmer, 1892 pg xxii

2 ‘Backyard Sheep and Pigs’, by Anne Williams 1977, pg.97



‘Chocolatl’, a ‘Wether’ (castrated ram)
 br. Scottish Half bred crossed to s. Jacob Ram, ‘Laban’

Introduction

The ‘Seaside Sheep Show’ was instigated to exercise a tradition for grazing livestock on common land. Artist Charlie Murphy was invited to research and round-up some sheepish art activities, prize competitions, stalls and performances in celebration of this right and related pastoral pleasures.

Her research has uncovered some extraordinarily texts and illustrations from the history and practices of breeding, shepherding and related wool and meat industries and this material provided the starting point from which the event has been conceived.

Readings from some key texts will accompany the day’s activities and provide an insight into the rich language, terminologies and literary legacies of sheep farming over the last three hundred years.



Sanger's Circus on Southsea Common. Courtesy of Portsmouth Museums and Records Service

Urban Myth

Assisted by staff at Portsmouth City Museum, Charlie's research reveals that this grazing right is actually something of an urban myth.

The Common, as it is known, is apparently misnamed- having never been common land.

The Common has previously been known as Froddington Heath, part of the ancient manor of Froddington granted to William de Warrene by William the Conqueror. The present name dates from the completion of the fort by Henry VIII. The land was of poor quality and its main value was as a military defence

Before it passed into the hands of the Corporation of Portsmouth in 1923, Southsea Common belonged to the Crown and was granted to the Leeke family. It was sold to the Government in 1785.



'Vitamin', a 'Wether' (castrated ram)
br. Scottish Half bred crossed to s. Jacob Ram, 'Laban'

A Small Flock of Traditional Breeds

Kate Steed, a local shepherdess, has kindly provided a small flock of traditional breeds of sheep for your pleasure.

Jacobs originated in Syria over 3000 years ago, arriving in England from Spain in the 18th century to graze the parks of large country estates. Their fleeces produce good quality demi-lustre wool, much sought after by spinners and weavers.

The Scotch Half-bred crosses Cheviot with a Border Leicester to produce a good fleece of white wool, clipping an average of 3 - 4 kg a year.

Suffolks are distinctively marked with a black head and feet with a long, thickset body and smooth shoulders. They have been bred to combine the build and quiet temperament of Southdowns with the taste and meat quality of Norfolk Horn.